

HEALTHCARE

# Healthcare Flooring Solutions





PURLINE; Cottage Oak

## Content

04	The Story of Matter Surfaces
07	Designing Healthcare Facilities
08	A Focus on Sustainability
11	Whole Facility Coverage
12	Healthcare Product Applications
14	Acute Care
17	Case Study: Nicklaus Children's Hospital Fetal Care Center
24	Ambulatory Care
27	Case Study: Skandionkliniken Cancer Clinic
36	Senior Living
39	Case Study: Ashman Grove Residential Aged Care
47	PURLINE Product Overview
49	PURLINE Product Highlights
51	Bolon Product Overview
53	Bolon Product Highlights
55	Formative Collection Product Overview
57	Formative Collection Product Highlights
59	Arrival Collection Product Overview
61	Arrival Collection Product Highlights



Ultra Entry



Bolon Artisan; Coal

# The Story of Matter Surfaces

Matter Surfaces curates premium design solutions for architects, interior designers, and end use customers. Our team draws on decades of practice as interior designers, healthy building ambassadors and construction professionals to find the ideal solution for your space.

Headquarters: NYC  
Showrooms: NYC and LA  
Inventory: GA

**Wellness**  
True wellness is holistic – encompassing person and planet. Material decisions for interior spaces often dictate caring for both. Entrance systems are your first line of defense when creating spaces that enhance wellness. Once inside, design flooring choices throughout a space have a substantial impact on both human and planet health. These topics are complex, and solutions often offer contradictions, but we’re committed to helping you make the right choices.

**Design**  
Design, in all its forms, is one of the primary engines for change in our society. Wellness cannot be achieved without the right design choices. Good Design moves and motivates change through discourse, beauty, and manifestation.

**Service**  
We take service seriously. Service starts with transparent information and context. Some people passively push information, while some aggressively edit to fit a narrative. We parse and curate in partnership with our clients so they can confidently make decisions for their projects. And when decisions are made, we make sure we deliver. Global logistics is one of our specialties, and we have warehouses throughout the country to process and ship materials as fast as the world allows. (Sometimes faster!)





# Designing Healthcare Facilities

Healthcare settings are among the most demanding institutional environments—from constant foot traffic to heavy machinery and equipment to blood and fluids. Matter Surfaces portfolio consists of whole-facility solutions to meet the extreme requirements of healthcare: the the Arrival Collection of air pollutant controlling foot grilles and matting, Bolon woven vinyl, PURLINE bio-polyurethane based flooring, and the Formative Collection of rubber and vinyl sheet and plank products.

### Hygienic

Controlling contaminants, airborne particulates, and infectious matter are of the utmost importance in healing environments. Capturing pollutants begins at the entrance, where dirt, debris, and moisture removal are key, and extends to interior spaces, where surfaces need to be non-porous to not harbor infectious agents. Matter Surfaces offers entry grilles and matting to trap outdoor particulates and moisture before they become indoor contaminants and resilient flooring options that are easy to clean and disinfect for increased infection control while creating comfortable healing spaces.

### Healthy

Choosing healthy flooring products for healthcare environments extends beyond selecting a sustainable option. Truly healthy floors have good woven into their DNA. Matter Surfaces curated a collection of products that are made from natural and rapidly renewable raw materials, are created through certified environmentally friendly manufacturing processes, and contribute positively to indoor air quality.

### Cleanability

Healthcare environments can get messy, and flooring solutions must stand up to harsh phenolic agents, staining fluids like iodine and blood, and anything else that may end up on them. Our collection of healthcare flooring options is independently tested to withstand scratching and staining. Our entire suite of healthcare solutions can be cleaned and maintained with the simplest of processes, such as vacuuming and mopping with pH neutral cleaner.

### Wellness

True wellness is holistic – encompassing person and planet. Material decisions for interior spaces should contribute to caring for both. Entrance systems are the first line of defense when creating spaces that enhance wellness. Once inside, design flooring choices throughout a space have a substantial impact on both human and planet health as well as patient recovery through blending aesthetics and performance.

### Durability

Controlling disease and infection is impossible if your flooring surfaces scratch, chip, or degrade under the stresses of aggressive cleaning. Flooring materials must offer exceptional mobility for wheelchairs, hospital beds, carts, and ADA-compliance to reduce slip and fall liability. We stand behind our products and offer warranties to support that.

### Safety

Floors are the leading cause of injury according to the National Safety Council (NSC). From lawsuits to missed workdays, slips, trips and falls can be costly. Integrating Matter Surfaces matting in the vestibule and lobby can prevent liabilities at the entrance, and many of our interior flooring options provide non-slip properties for increased traction and enhanced patient safety.

### Design

Decades of independently validated research suggests that healthcare environments resembling the warmth and comfort of home promote healing and decrease recovery time, and evidence-based design principles emphasize the connection between the built environment and health outcomes. Many of our product lines are available in authentic stone and wood patterns that allow for natural pattern incorporation and contribute to a biophilic design strategy.

### Reflectivity

Bright reflections on high-gloss surfaces create the look of “wet floors” inducing anxiety for slips and falls among the elderly and those with dementia. The matte and satin finishes of Matter Surfaces materials eliminate bright reflections on flooring under light sources.

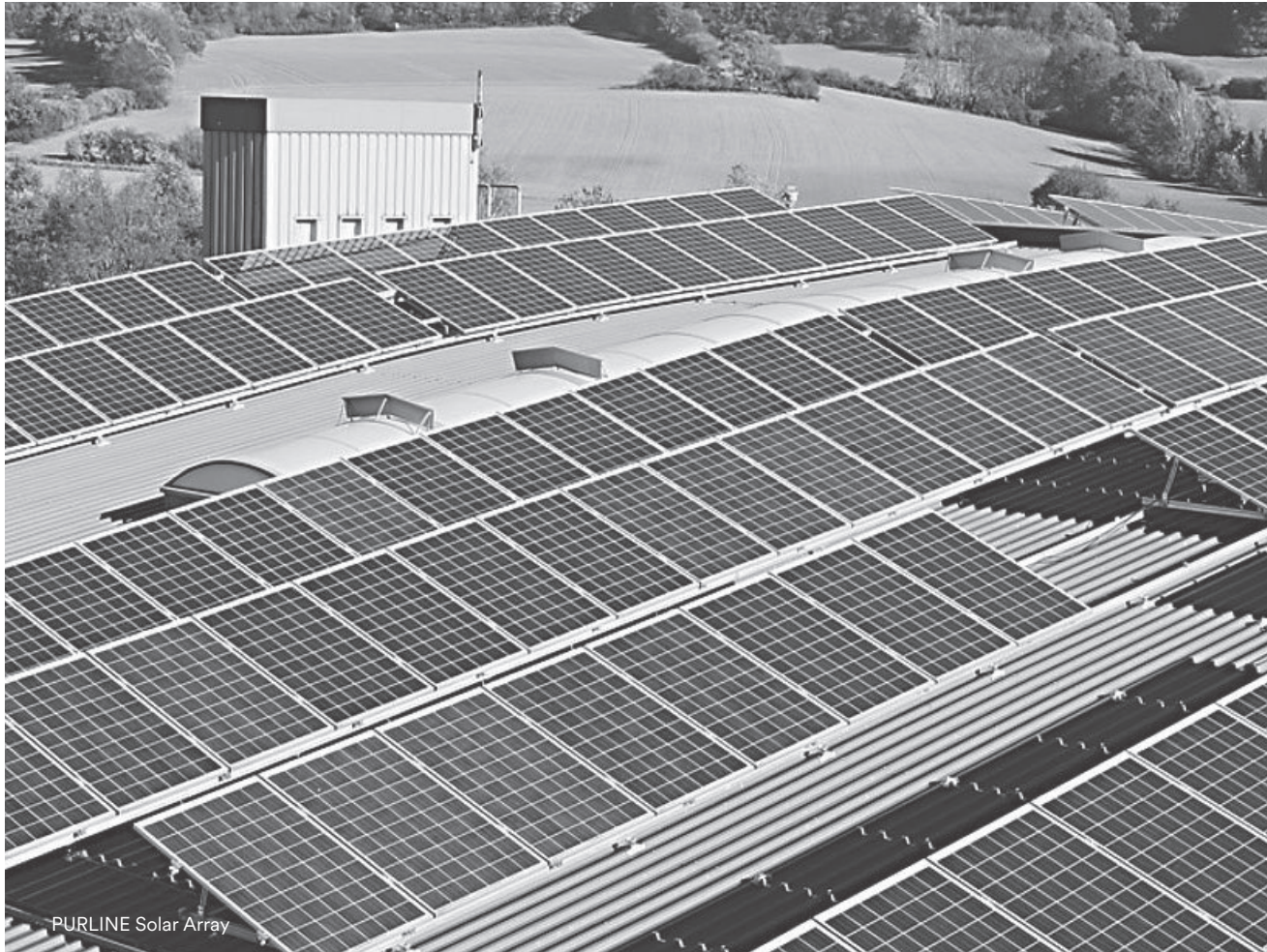
# A Focus on Sustainability

Matter Surfaces curates partnerships with like-minded organizations that focus on quality, dependability, and environmental stewardship.

**Our partners are committed to producing eco-friendly products through:**

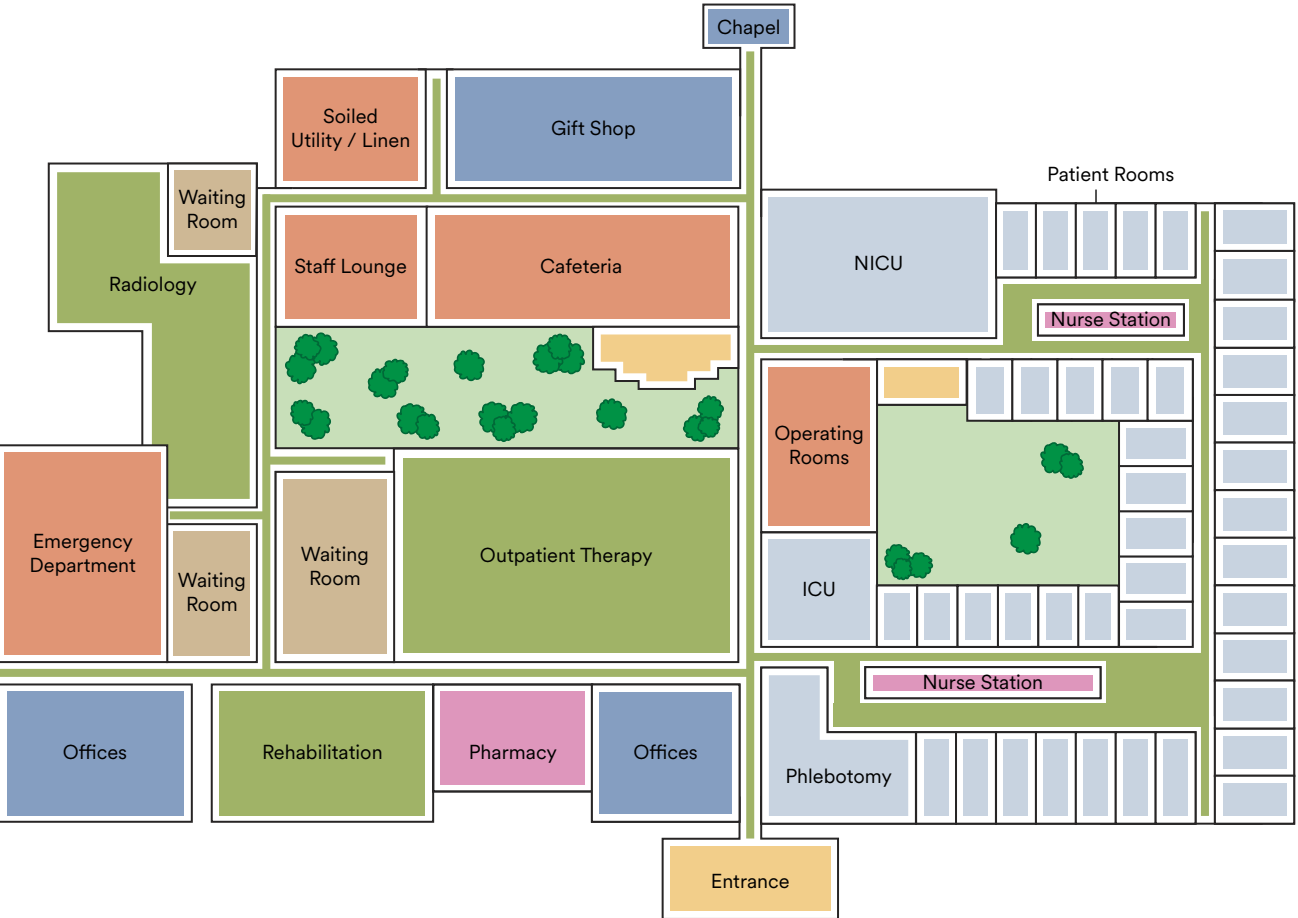
- Exceeding legislative demands
- Utilizing renewable energy in production processes
- Purchasing practices
- Eliminating the use of hazardous substances from materials
- Socially-compatible production of raw materials
- Product recycling
- Utilizing rapidly renewable raw materials
- Recovering energy from non-recyclable products
- Anticipating future legislation
- Ensuring environmental control processes fulfill international standards with ISO 14001 certification

The Matter Surfaces healthcare product offering includes a variety of entrance and design flooring solutions with unmatched sustainability credentials.





# Whole Facility Coverage



- Bolon
- Formative Sheet
- PURLINE Roll Goods
- Formative 2.5 LVT
- PURLINE Planks
- Formative Rubber
- Arrival

# Healthcare Product Applications

Services and Spaces	PURLINE Roll Goods	PURLINE Planks	Formative Sheet	Formative 2.5 LVT	Formative Rubber	Bolon	Arrival Collection	Comments
Phlebotomy	●	●	●	●				
Cath Lab	●		●					Weld/Integral Cove/PURfilm dry adhesive
Chapel	●	●	●	●		●		
Clean Room/Compounding	●		●					Weld/Integral Cove
Clean Utility/Linens	●		●					Weld/Integral Cove
Corridors (Patient Circulation)	●	●	●	●				
Corridors (Service/Back of House)	●	●	●	●				
Corridors (Surgery/Sterile)								Heterogenous required/ Weld/Integral Cove
Cafeteria/Dining	●	●	●	●		●		Weld/Integral Cove/PURfilm dry adhesive/Consider Med tones
Decontamination	●		●					
Dialysis	●	●	●					
Emergency Department	●	●	●	●				Consider Medium-Dark tones
Entry Vestibule							●	Trilogy Tile, Foot Grilles, Entrance Matting
Elevators (Public)	●	●	●	●				Consider Medium-Dark tones
Elevators (Service)	●	●	●					Consider Medium-Dark tones
Endoscopy Procedure	●		●					Weld/Integral Cove
Exam Room	●	●	●	●				
Gift Shop	●	●	●	●		●		
Hyperbaric Medicine								ED material required
ICU	●	●	●					
Infusion Treatment Areas/Bays	●	●	●	●				
Labor & Delivery Rooms	●	●	●					PURfilm recommended
Labor & Delivery Corridors	●	●	●	●				PURfilm recommended
Lab Space (general)	●	●	●					Review chemical usage with district sales manager
Mammography	●	●	●	●		●		
MRI	●	●	●	●				Check with regional sales manager as static dissipative (ESD) may NOT be required

Services and Spaces	PURLINE Roll Goods	PURLINE Planks	Formative Sheet	Formative 2.5 LVT	Formative Rubber	Bolon	Arrival Collection	Comments
NICU	●		●					Weld/Integral Cove, review LRV with district manager
Nurse Station	●	●	●	●	●			
Operating Rooms (General, Cardio, Neuro, Hybrid, etc.)	●		●					Homogenous sheet required/Weld/Integral Cove
Outpatient Therapy	●	●	●	●				
PACU/Surgical Recovery	●		●					
Pathology/Histo Labs	●		●					Weld/Integral Cove/Smooth Surface Texture only if paraffin is used
Patient Room	●	●	●	●				Consider Medium tones/PURfilm dry adhesive
Patient Restroom	●	●	●					
Pharmacy	●	●	●		●			Consider Medium-Dark tones
Procedure Rooms (includes cystoscopy, urology & minor procedure)	●	●	●	●				Weld/Integral Cove
Radiology (Imaging Suites)	●	●	●	●				LVT is prep areas only
Rehabilitation PT/OT	●	●	●	●	●			
Staff Lounge	●	●	●	●	●	●		
Sterile Processing	●		●					Weld/Integral Cove/Consider same flooring as decon for streamlined maintenance
Soiled Utility/Linen	●		●					Weld/Integral Cove/Consider Medium-Dark Tones
Support Services (SS)	●							
SS - Break Room	●	●	●	●	●	●		
SS - Conference Rooms	●	●	●	●		●		
SS - EVS/Maintenance Closet	●	●	●	●				
SS - Lactation Rooms	●	●	●	●		●		
SS - Open Offices/Work Stations	●	●	●	●		●		
SS - Private Offices		●	●	●		●		
Trauma	●		●					Weld/Integral Cove/PURfilm Dry Adhesive/Consider Medium-Dark Tones
Triage	●	●	●	●				
Ultrasound	●	●	●	●				
Waiting/Lobby	●	●	●	●		●		Consider Medium-Dark Tones

The Recommended Application Chart is based on industry best-practices and intended to be used in conjunction with local building codes/requirements and FGI guidelines. This chart is a working document and will be updated periodically. Specialized site conditions or goals can affect recommendations. Please contact your Matter Surfaces representative with questions or additional information.



 Nicklaus  
Children's  
Hospital  
Fetal Care Center

# Acute Care

PURLINE; Cottage Oak





PURLINE; Pacific Oak

# Case Study: Nicklaus Children's Hospital Fetal Care Center

## The Story

Nicklaus Children's Hospital's Fetal Care Center opened the doors to its special delivery unit for high-risk infants on Monday, June 3, 2019. This specialized birthing unit is one of only a few in the entire US that serves healthy mothers expecting to deliver babies with severe pre-diagnosed health issues such as heart defects, neurological conditions, craniofacial anomalies, and other conditions that require immediate pediatric care once they are born. The new unit allows families to stay together from birth through the infant's care.

As a teaching hospital ranked amongst the best children's hospitals in the nation by US News & World Report, Nicklaus Children's Hospital is a Level 1 pediatric trauma center committed to delivering the highest quality care to the children and families they serve. The quality care commitment meant that before building the Center, its executives would visit every fetal care center in the country to learn what was working for them and what wasn't.

The hospital hired the innovative firm NBBJ in Columbus, Ohio, to design the 10-bed maternity unit project. Designers Liz Loxterkamp, Alison Rock and Edwin Beltran faced several challenges while devising a plan that would meet the requirements for the renovated space within the hospital's main building. Sustainability was important, but the top priority was to select materials that would not further compromise the health of the newly born infants. The design team focused on choosing materials that comply with the highest standards for healthcare, such as low VOC and no VOC products.

One of the first challenges the team faced was creating an adult environment amid a facility solely devoted to children while maintaining the Nicklaus brand aesthetic. To solve this challenge, they took a cue from the residential neighborhood at the edge of the Coral Gables community of Miami, Florida where the hospital is located. Coral Gables is "The City Beautiful" that blends lush tree-lined avenues, warm hued colors and the Mediterranean Revival architectural style. The designers also took inspiration from spa environments and developed a theme that would create a calm and soothing ambience.

Flooring was only a small percentage of the hospital's construction budget, but it became the central design element because it would greatly influence the outcome. The team agreed that they would choose a wood look to fit the warm and inviting aesthetic they were seeking. Deciding on the type of floor covering would become their next obstacle.

Alison brought PURLINE flooring to the stakeholders for consideration. She learned about the bio-polyurethane product from Matter Surfaces several weeks prior, and as an easy to clean floor covering with a wide range of attractive and authentic looking wood tones, it might have been the perfect choice.

While stakeholders admired the look of PURLINE and that it had not just low, but no VOCs, the environmental services (EVS) team expressed concern about cleanability of the unfamiliar flooring. EVS had experience maintaining rubber flooring and sheet vinyl that was installed in other areas of the hospital and urged the designers to select one of those products instead. The design team proposed a test installation with 8' x 8' sections of each of the three flooring types in the well-traveled maintenance corridors. After two months of use and standard maintenance, PURLINE outperformed the other materials, and the test convinced the EVS crew that it was the best choice.

All stakeholders were pleased with the installation of PURLINE Pacific Oak with Pure White Stars accents throughout the specialized delivery unit, which included five labor and delivery rooms, five antepartum rooms, and two operating rooms. In addition to ease of maintenance that doesn't require stripping, waxing, or harsh chemicals, low VOCs and achieving the spa-like aesthetic, PURLINE is truly sustainable and conforms to Health Care Without Harm's Healthy Flooring criteria.

## Location

Miami, Florida

## Facility Type

Acute Care; Hospital

## Products

PURLINE Rolls Pacific Oak and Pure White Stars

## Benefits:

- **Healthy:** Made of three natural and rapidly renewable ingredients- chalk, castor oil and canola oil.
- **Sustainable:** Provides incomparable sustainability certifications including Cradle to Cradle Silver, GreenGuard Gold, FloorScore, Declare, EPD, and HPD.
- **Hygienic:** The clear PU top layer creates a hardwearing, non-porous surface that can easily be cleaned with conventional processes and chemicals.



PURLINE; Pure White Stars



PURLINE; Pacific Oak

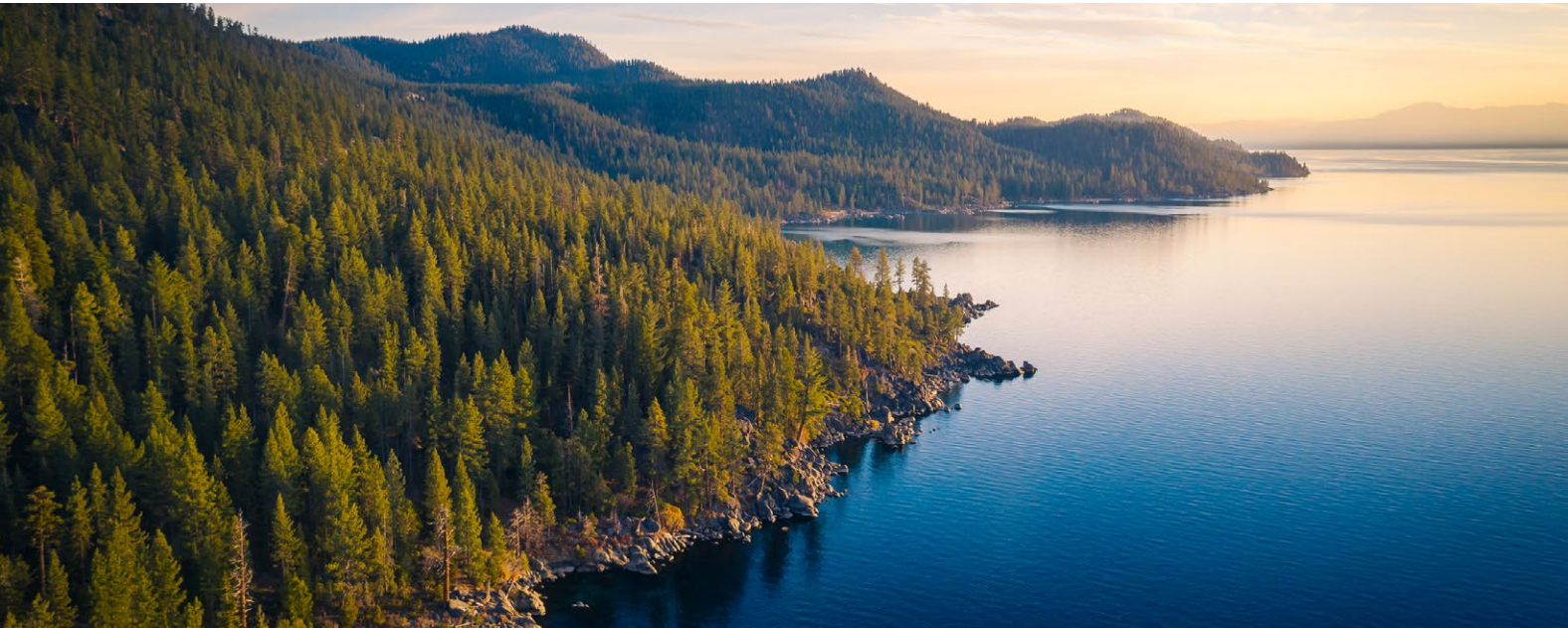
# Acute Care



PURLINE; Classic Oak Summer, Royal Chestnut Desert



PURLINE; Classic Oak Summer

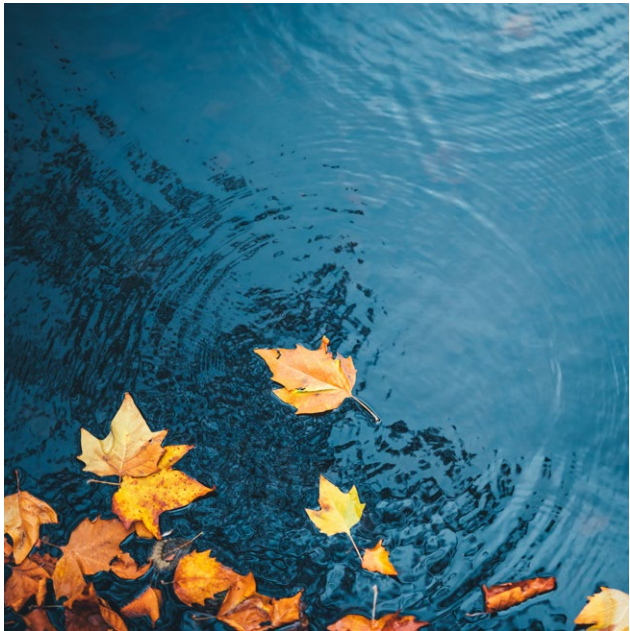


PURLINE; Classic Oak Summer, Royal Chestnut Desert

# Acute Care



Formative Sheet; Storm



Formative Sheet; Swell

# Acute Care



Arrival Collection; Ultra Track



# Ambulatory Care

Bolon by You; Lace



Bolon Botanic; Osier

# Case Study: Skandionkliniken Cancer Clinic

## The Story

Skandionkliniken Cancer Clinic in Uppsala, Sweden is the first cancer clinic in the Nordic region for innovative proton beam therapy. Believing that environment is an important component to healing environments, the vision for the Skandion Clinic was one of a comfortable and relaxing atmosphere for patients and visitors.

The new building, with an outside characterized by the light and simplicity of its perforated facade, opened in 2015. Designed by Link Arkitekter, the space is layered with natural materials- including wood, stone, and textiles- to create a peaceful environment.

The firm chose Botanic tiles in Osier for corridors, conference areas, and training rooms for its woven, textile-like appearance and durability under constant foot traffic. The tiles were installed in a striped pattern for a subtle playful pop to compliment the cheery yellows and greens throughout the spaces.

## Location

Uppsala, Sweden

## Facility Type

Ambulatory Care; Cancer Clinic

## Products

Bolon Botanic Osier

## Benefits:

- **Wellness:** Bolon materials are FloorScore certified to support healthy indoor air quality.
- **Comfort:** Provides comfort underfoot and has antistatic properties to protect against unpleasant shocks.
- **Waterproof:** The backing fused to Bolon is impervious to liquid, resulting in a waterproof and rot-proof product.



Bolon Botanic; Osier



Bolon Botanic; Osier

# Ambulatory Care



PURLINE; White Marble



PURLINE; White Marble



PURLINE; White Marble

# Ambulatory Care



Bolon Botanic; Cilia, Osier



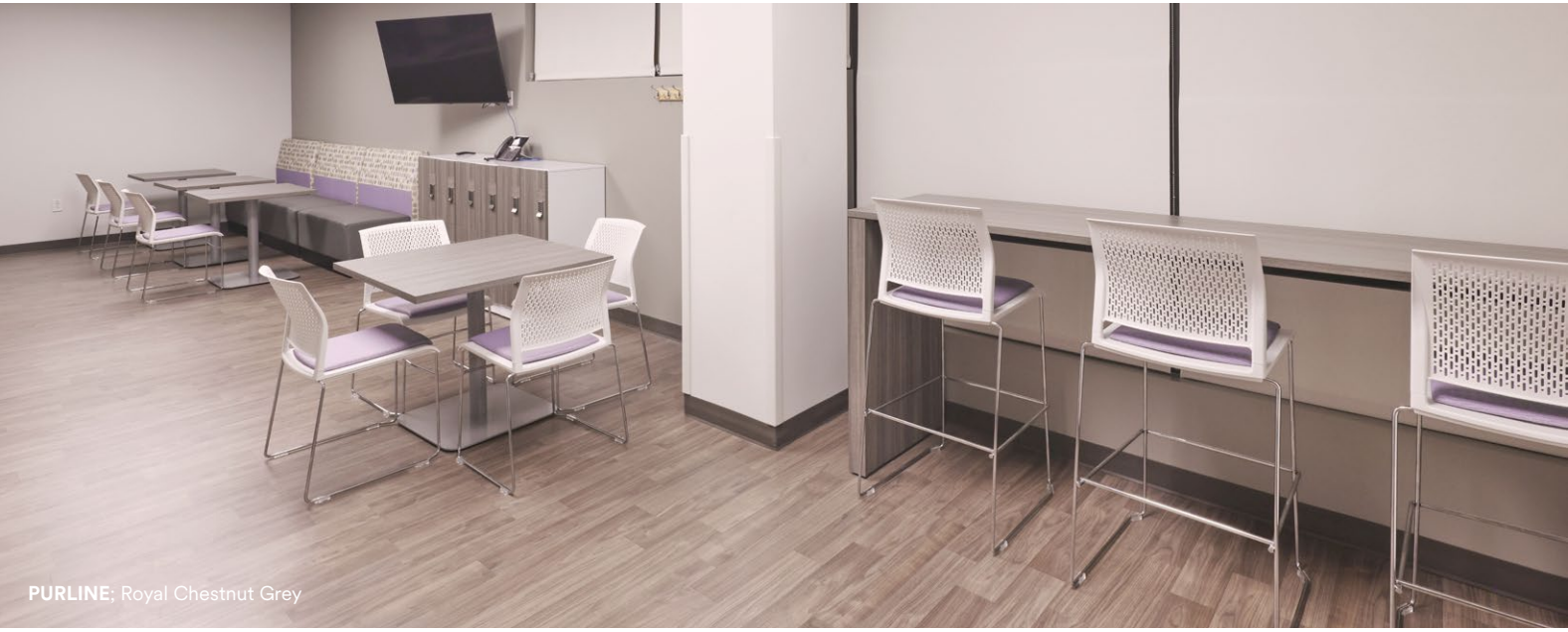
Bolon by You; Lace



# Ambulatory Care



PURLINE; Napa Walnut Brown, Missouri Oak



PURLINE; Royal Chestnut Grey



PURLINE; Royal Chestnut Grey

# Ambulatory Care





# Senior Living

Bolon BKB: Sisal Plain Sand



Bolon Botanic; Cilia

# Case Study: Ashman Grove Residential Aged Care

## The Story

Ashman Grove is an 87-bed residential aged care facility providing low- and high-care for aging individuals and those with memory loss and dementia. The facility offers a new state of the art residential wing comprised of single and double accommodations, multiple lounges, three communal dining rooms, a private function room, physiotherapy spaces, a salon, and a library.

Bolon Tiles in Botanic Cilia were chosen for the indoor corridors at Ashman Grove to complement the overall design color palette of warm, mellow neutral tones. Bolon's woven surface provides a naturally non-slip surface that withstands heavy foot traffic, wheelchairs, and other wheeled equipment. The satin finish of the Bolon material eliminates bright reflections on flooring under light sources. Such bright reflections on high-gloss surfaces create the look of "wet floors" causing slips and falls among the elderly and those with dementia.

## Location

Brompton SA, Australia

## Facility Type

Senior Living Facility

## Products

Bolon Tiles Botanic Cilia

## Benefits:

- **Non-slip:** The woven structure is naturally non-slip.
- **Sustainable:** 100% fully recyclable with environmental certifications including GreenTag, BREEAM, EPD, and Floorscore.
- **Comfort:** Provides comfort underfoot and has antistatic properties to protect against unpleasant shocks.
- **Reflectivity:** The matte or satin finishes eliminate bright reflections on flooring under light sources that cause slips and falls among the elderly and those with dementia.



Bolon Botanic; Cilia



Bolon Botanic; Cilia

# Senior Living



Bolon Artisan; Coal



Bolon Artisan; Coal



Bolon Artisan; Coal

# Senior Living



Formative Sheet; Dune



Formative Sheet; Shell



Formative Sheet; Haze

# Senior Living



PURLINE; Village Oak Brown



# PURLINE Product Overview

Made from rapidly renewable raw materials, PURLINE bio-polyurethane based flooring combines unparalleled sustainability with durability and ease of maintenance for a wide range of healthcare settings.

### Product Structure

PURLINE material is comprised of five layers created from natural raw ingredients: chalk, canola oil and castor oil.

#### 1. Top layer, Clear Polyurethane Performance Layer

A clear PU top layer creates a hygienic, non-porous surface.

#### 2. Middle layer, Décor Paper Print Design

FSC-certified décor paper layer is printed with water-based inks and gives the product its authentic wood and stone patterns, bold colorways and warm neutrals.

#### 3. Middle layer, Glass Fiber Reinforcement

Glass fiber reinforcement provides dimensional stability.

#### 4. Middle layer, Solid Bio-Polyurethane Base Layer

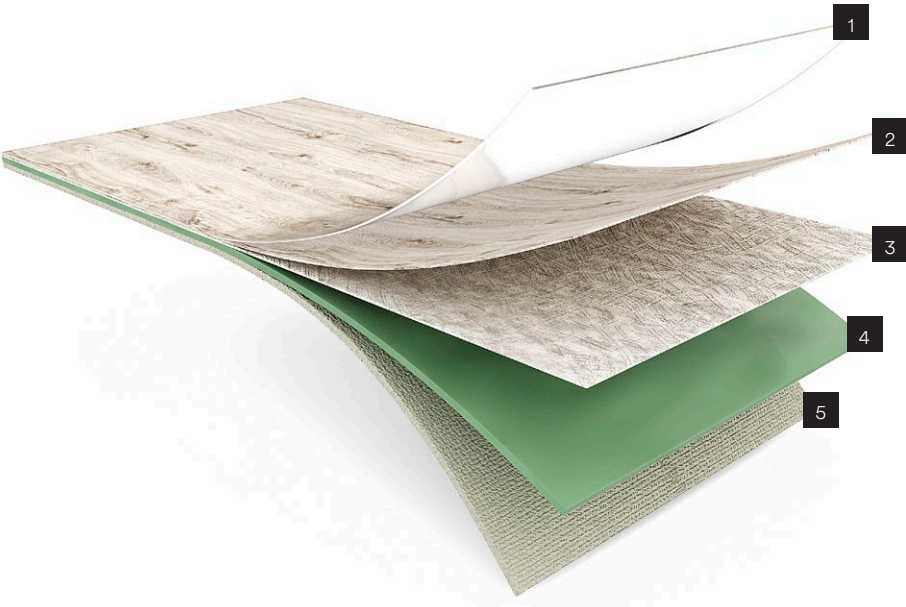
A PU base layer for increased durability.

#### 5. Bottom layer, FleeceTEC® Backing System

Integrated FleeceTEC® System bottom layer for easy installation and comfort underfoot.

### Designed by Nature. Refined by Science.

Production and distribution efforts are based in East Westphalia- built upon decades of uncompromising German engineering and manufacturing processes. The spirit of development rooted in scientific discovery that led to the creation of PURLINE is still very much alive. Influenced by growing global building guidance, the design of the PURLINE collection continues to evolve to bring to market the most durable and healthful designer flooring solution.







# PURLINE Product Highlights

**Healthy**

PURLINE is made of three natural and rapidly renewable ingredients, chalk, castor oil and canola oil, making it one of the most environmentally-friendly flooring products available on the market.

**Sustainable**

PURLINE material offers incomparable sustainability certifications, including: Cradle to Cradle Silver, GreenGuard Gold, FloorScore, Declare, EPD and HPD.

**Non-staining**

PURLINE exceeds ASTM F925 standards and will not stain, even when cleaned with Bleach, Alcohol or Ammonium Hydroxide, unlike carpet or fibered products.

**Hygienic**

The clear PU top layer creates a hardwearing, non-porous surface that can easily be cleaned with conventional processes and chemicals. PURLINE can also be disinfected with the harshest cleaning agents. Scientifically formulated Canola and Castor oil are polymerized to create bio-polyurethane, a resilient compound, that when bound with chalk, formulates PURLINE's innovative core.

**Authentic designs**

The décor paper layer delivers realistic patterns and simulated textures to PURLINE's wood planks and stone tiles.

**Wellness**

PURLINE is FloorScore certified and contributes positively to indoor air quality. PURLINE flooring can contribute to health and wellness goals, including WELL certification.

**Reflectivity**

The matte finish of PURLINE materials eliminates bright reflections on flooring under light sources. Bright reflections on high-gloss surfaces create the look of "wet floors" causing slips and falls among the elderly and those with dementia.



Bolon Botanic; Cilia, Tilia

# Bolon Product Overview

Durable, safe and easy to care for. Bolon woven vinyl flooring is a proven hygienic alternative to carpet and can be used in diverse healthcare environments with complete confidence.

## Product Structure

Bolon material is comprised of four layers, fused together through a heating process.

### 1. Top Layer, Weave

A set of vinyl threads (warp and weft) that are woven together and characterized as profiled, elliptical or folded.

### 2. Upper Layer, Backing

Fire-protective backing (Bfl-s1 Classification).

### 3. Middle Layer, Backing

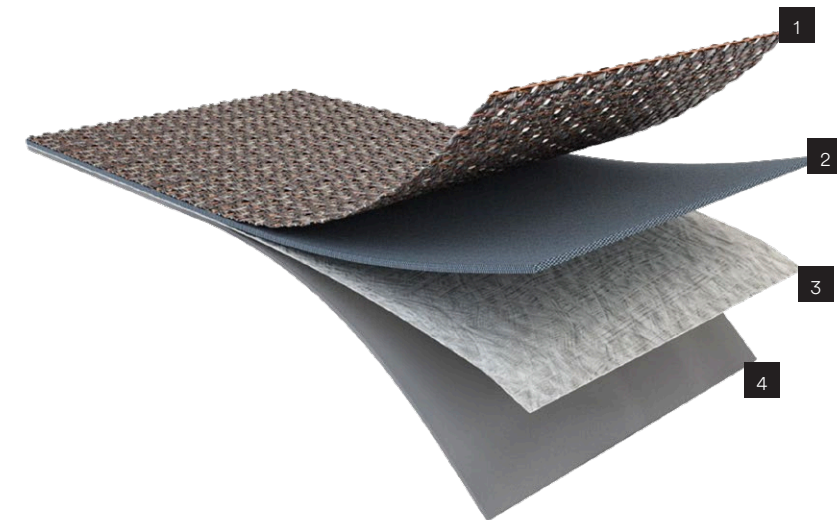
Glass fiber layer for dimension and stability.

### 4. Bottom Layer, Backing

Adjustable for rolls, tiles or acoustic needs. This layer is comprised of up to 33% recycled content.

## 100% Made in Sweden | 100% Quality

All design, production and distribution activities are based at the factory in Ulricehamn – Bolon even produces their own raw materials there. This strategy of centralization ensures expertise across the entire value chain, while encouraging flexibility and innovation. The designs deliver the beauty of a woven textile with all the benefits of resilient flooring – long life cycles and ease of installation and maintenance. As an international design brand, boasting collaborations with world-renowned architects and designers, Bolon always stays a step ahead.





Bolon Studio™ Shape: Create & Botanic

# Bolon Product Highlights

## The performance behind the aesthetic.

### Waterproof

The backing fused to Bolon materials is impervious to liquid, resulting in a waterproof and rot-proof product.

### Non-Slip

The woven structure of Bolon flooring is naturally non-slip, making it appropriate for public areas exposed to heavy foot traffic.

### Indoor / Outdoor

Bolon material is suitable for both indoor and controlled outdoor use, maintaining its color and structure when exposed to natural weather elements.

### Quality Assurance

Every one of Bolon's collections are developed, designed and manufactured in Sweden, without any exceptions. This allows Bolon to control every product put to market, with a focus on quality and detail.

### Sustainability

Bolon owns and operates an onsite recycling plant, implements geothermal cooling practices and produces all material free of phthalates. The material itself is 100% fully recyclable with environmental certifications including GreenTag, BREEAM, EPD, and Floorscore, which can contribute to higher LEED ratings and WELL certification.

### Hypoallergenic

Bolon material is hypoallergenic with very low VOC emissions, so it contributes positively to indoor air quality.

### Comfort

Bolon flooring provides comfort underfoot and has antistatic properties to protect against unpleasant shocks.

### Thermal Insulation

Bolon flooring offers warmth for greater energy savings.

### Wellness

Bolon materials are FloorScore certified to support healthy indoor air quality. Many Bolon flooring collections also contribute to biophilic design and natural pattern incorporation strategies.

### Reflectivity

The matte or satin finishes of Bolon materials eliminate bright reflections on flooring under light sources. Bright reflections on high-gloss surfaces create the look of "wet floors" causing slips and falls among the elderly and those with dementia.



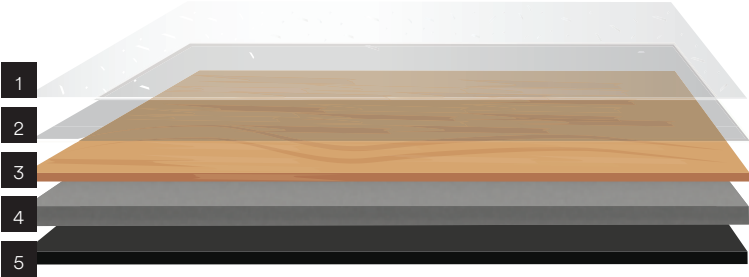
# Formative Collection Product Overview

The Formative Collection from Matter Surfaces offers all the refinement of wood, stone, terrazzo and linen combined with the benefits of resilient flooring: durable, maintainable and comfortable.

### Formative 2.5 Product Structure

Formative 2.5 combines realistic wood patterns with the durability of LVT.

1. 0.015mm coating
2. Wear Layer
3. Print Layer
4. Vinyl Core
5. Vinyl backing

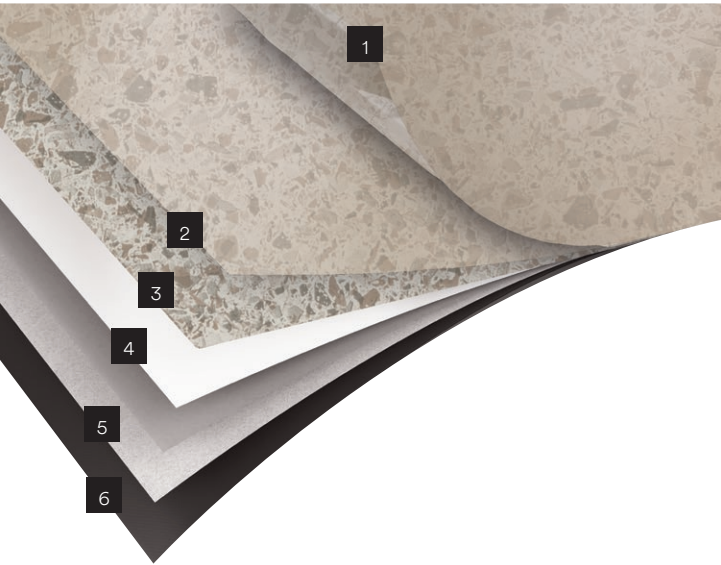


### Formative Sheet Product Structure

Phthalate- and plasticizer-free resilient vinyl roll goods formulated from sugar beets and citric acid esters and available in contemporary wood, stone, terrazzo, and linen looks in 3 thicknesses based on application setting.

1. Surface protection
2. Transparent wear layer
3. Design print
4. Compact layer
5. Glass fiber reinforcement
6. Backing

- 2.0mm: Compact vinyl backing
- 2.85mm: Integrated impact sound insulation system with fleece backing
- 3.9mm: Integrated impact sound insulation system with thick blown vinyl backing





# Formative Collection Product Highlights

The Formative Collection from Matter Surfaces offers all the refinement of wood, stone, terrazzo and linen combined with the benefits of resilient flooring: durable, maintainable and comfortable.

## Formative 2.5

Emulating nature's patterns and colors in an extremely durable and easy to maintain and install authentic-looking, cutting-edge luxury vinyl plank.

### Natural Patterns

Available in 12 authentic wood designs that mirror the textures and patterns of real hardwood.

### Easy Maintenance

The 20 mil wear layer is scratch resistant and requires simple maintenance routines without the need for sanding or resurfacing.

### Immediate Delivery

Deep stocking levels allow for quick shipping, ideal for any project timeline.

## Formative Sheet

Resilient vinyl roll goods in contemporary designs in wood, stone, terrazzo, and linen looks available in 3 thicknesses based on usage application: 2.0mm, 2.85mm, 3.9mm.

### 2.0mm

#### Simple Maintenance

Smooth top surface makes it easy to clean and disinfect.

#### Cleanroom Approved

Meets ISO Class 4 cleanroom requirements.

#### Extreme Point Loads

Resists up to 2,000 PSI indentation.

### 2.85mm

#### Comfort Underfoot

Blown vinyl with fleece backing provides cushion and comfort under footfall.

#### Acoustic Properties

Provides 15dB sound reduction to dampen noise transmission.

#### Heavy Equipment

Resists up to 1,000 PSI indentation.

### 3.9mm

#### Footfall comfort

Thick blown vinyl backing provides comfort underfoot.

#### Noise Dampening

Minimizing sound transmission with 19dB sound reduction rating.

#### Acoustic Insulation

Offering additional soundproofing qualities and exceeding International Building Code with an IIC rating 54.



# Arrival Collection Product Overview

The Arrival Collection is based on decades of experience allowing us to curate some of the most effective, design-friendly entry solutions.

## Architectural Grilles

**Heavy-gauge aluminum grilles offered in solid aluminum or with matting inserts**

Architectural grilles enhance a property's aesthetics while providing performance characteristics- including promoting positive indoor air quality, removing moisture and debris, and withstanding high foot traffic and heavy rolling loads.

**Rating:** Best  
**CleanZone™ Coverage:** Zone 1, Zone 2  
**Installation Method:** Deep recessed

## Foot Grilles

**Aluminum, rubber or vinyl foot grilles with or without matting inserts**

Foot grilles offer many of the benefits of architectural grilles- including promoting positive indoor air quality, removing moisture and debris, and withstanding high foot traffic- without the need for a deep recess.

**Rating:** Better  
**CleanZone™ Coverage:** Zone 1, Zone 2  
**Installation Method:** Shallow recessed, Surface mounted

## Entrance Matting

**Roll good, walk-off and logo matting available in range of patterns, thicknesses, fiber construction, backing and colorways**

Entrance matting is essential in wintery or wet conditions to ensure the safety of a property's guests. Matting is the perfect complement to architectural or foot grilles, and many of our entrance matting options can be used as inserts in our grilles.

**Rating:** Good  
**CleanZone™ Coverage:** Zone 2, Zone 3  
**Installation Method:** Surface mounted





# Arrival Collection Product Highlights

An entryway is the first stop for all visitors and occupants entering a building, and first impressions matter. The Arrival Collection from Matter Surfaces offers a variety of high-performance entrance and matting solutions that do not sacrifice aesthetics.

Every building has an entrance- let your guests know they've arrived.

## Wellness

An effective entrance and matting system helps to improve indoor air quality and can help contribute to health and wellness goals like LEED and WELL.

## Green Certifications:

- Green Label Plus
- Environmental Product Declarations (EPDs)

## Safety

Floors are the leading cause of injury according to the National Safety Council (NSC). From lawsuits to missed work days, slips, trips and falls can be costly to organizations.

The Arrival Collection includes foot grilles and matting products that scrape and trap dirt, debris and moisture to help prevent liabilities.

## Design, Templating, and Installation

Custom installs, shapes and logo matting are our specialty.

## Simple Maintenance

A proper entrance system traps dirt and moisture to prevent damage to interior flooring surfaces and lowers maintenance requirements, saving time and money.

Many Arrival products only require vacuuming to maintain their beauty and effectiveness.

## Durability

All Arrival Collection entrance and matting products are commercially rated.

## Rated for:

- Extreme traffic (1M+ guests per year)
- Heavy rolling loads
- Indoor and outdoor applications

